

TEAM-CENTERED, CUSTOMIZABLE APPLICATION ANALYTICS



Build Better Software Faster with Secure, Actionable Analytics

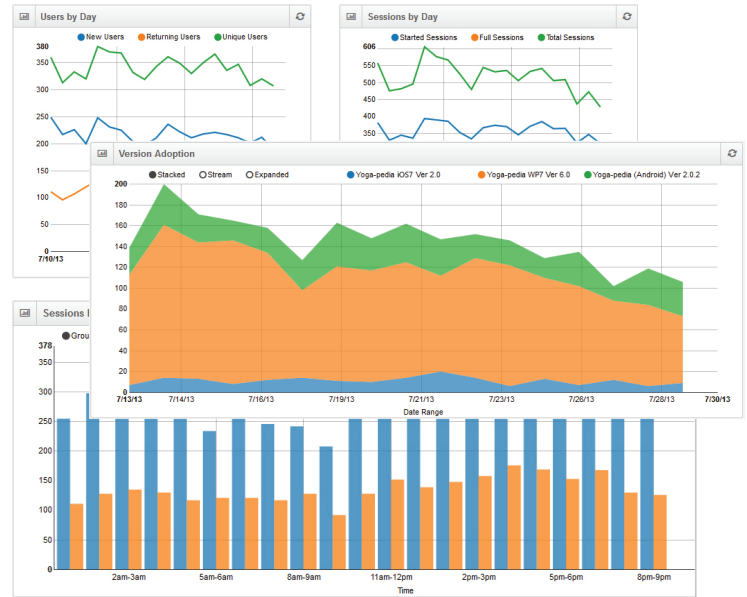
Managing anything without metrics is like flying blind. Without application analytics, you will miss quality goals, have higher maintenance costs and lower customer satisfaction. With it, you can prioritize work based on actual usage patterns, identify, triage and resolve problems before your customers are seriously impacted and **drive both hard and soft costs to a minimum.**

PreEmptive Analytics™ Workbench provides role-based, real-time visibility into application usage, adoption, user behavior and software quality so you can take the guesswork out of your decision making.

Only See What is Important to You

PreEmptive Analytics Workbench delivers real-time, role-based insights into application adoption, usage, performance and operational impact - saving you time and money.

- Customer-managed repository delivers enhanced security, configuration and extensibility
- A complete suite of usage, adoption and trend analysis metrics
- Built using noSQL indexing technology for real-time feedback and analysis
- Intuitive extensibility points supporting customized computations and visualization
- Bundled with an Analytics Data Hub providing unequalled resilience, scalability and deployment flexibility
- Available on-premise or in a hosted environment



Feature Tracking

Individual features can be tracked including usage, duration and stability. Further, custom data values can be captured and used to better measure user experience, behavior and preferences.

Capabilities include:

- Feature usage over time
- Volume and duration of usage
- Parameters passed and selections made within features
- Trending and comparison across applications and within versions

Feature Name	Count	Sessions	Avg per Session	% of Sessions	Avg. Length
Page Created	16107	2924	5.51	28.30%	0s
AdEvent	11752	3327	3.53	32.20%	0s
Ad Activity	10603	2341	4.53	22.66%	0s
PoseTopicFound	5747	1451	3.96	14.04%	0s
Pose Viewed	4195	993	4.23	9.61%	0s
PoseBrowsed	3434	1246	2.76	12.06%	0s
PoseFound	2745	895	3.07	8.66%	0s
Video Started	495	407	1.22	3.94%	0s
Find Pose Topic	257	66	3.89	0.64%	0s
Studio Link Clicked	116	102	1.14	0.99%	0s

Exception Reporting

Software quality and user experience across cloud, mobile and other emerging runtime platforms is easily managed.

Capabilities include:

- Capture unhandled, handled and thrown exceptions
- Collect stack traces and system messages
- Compare exception populations with stable sessions
- Integrate exception reports across runtimes and programming languages
- Segment by equipment, culture and other demographics
- Seamless integration with PreEmptive Analytics for TFS

Session & User Data

With PreEmptive Analytics, decision makers enjoy near real-time access to a variety of analytics and telemetry with no programming or source code changes.

“Out-of-the-box” metrics include:

- Application runs
- Unique users
- Average time in application
- User location
- Operating systems and runtimes

OS	Full Sessions	Avg. Length
Windows Phone 8	2315	1m 45s
Windows Phone 7.1	909	2m 30s
Linux 3.0	763	14m 42s
Linux 2.6	399	3m 12s
Linux 3.4	180	2m 30s
Linux 3.1	34	2m 6s